

BDG SYNTHESIS

Certificate of Analysis

BDG Synthesis certifies that this reference material meets or exceeds the specifications stated herein.

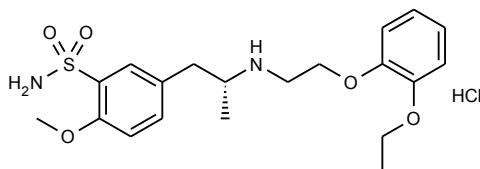
Neil Beare

Neil Beare, PhD, Director
4 November 2016

Name: Tamsulosin HCl

CAS Number: 106463-17-6

Structure:



Molecular Weight: $C_{20}H_{28}N_2O_5S \cdot HCl = 444.97$

Lot Number: BDG 3418

Appearance: White, crystalline solid

Purity By HPLC: 99.8 %

Re-test Date: 4 November 2021

Storage and Handling:

Temperature:	refrigerate for prolonged storage; may be handled and shipped at ambient temperature.
Humidity:	not believed to be hygroscopic; may be handled in normal laboratory atmosphere.
Light:	protect from strong sunlight.
Caution:	only experienced laboratory personnel should handle the material.

Identity and Purity

Proton NMR Spectrum

Identity: the signals are consistent with the proposed structure and in accord with literature where available.

Residual Solvents: no residual solvents are observed.

Impurities: no significant impurities are evident in the spectrum.

Carbon-13 NMR Spectrum

Identity: the signals are consistent with the proposed structure and in accord with literature where available.

High-resolution Mass Spectrum (FAB+)

Found m/z 409.1786. $C_{20}H_{29}N_2O_5S$ $[M+H]^+$ requires m/z 409.1797. The deviation of 2.6 ppm is within normally accepted limits for the establishment of identity by HRMS.

HPLC

A sharp, symmetrical peak is observed (99.8 %). Note: in the absence of reference materials for preparing calibration curves, it is assumed that all peaks have the same detector response. Where possible, the conditions of analysis follow a pharmacopeial or literature method, or have been adapted from same.

Elemental Analysis

	Found:	C 53.98, H 6.70, N 6.27 %
$C_{20}H_{28}N_2O_5S \cdot HCl$	Requires:	C 53.98, H 6.57, N 6.30 %

The elemental analyses fall within generally accepted limits for establishing the molecular formula given. The results may also be taken to imply the absence of significant quantities of water or inorganic salts (which have not been elsewhere tested for because of sample size limitations).

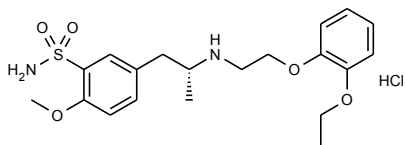
The available quantity of custom-synthesised material is always small, and this limits the extent and type of analytical data which can be obtained. This Certificate is presented in descriptive format for use by analytical chemists who are trained in the use of custom-synthesised materials. Custom materials often contain higher levels of residual solvents and/or water, and we urge you to use the corrected purity where needed rather than the raw HPLC purity. This compound is intended for use as an analytical reference material and it is not for human administration. Structures are shown with relative stereochemistry unless otherwise specified.

The re-test date is assigned from experience gained with the material in the laboratory and/or on storage. It is not possible to perform formal storage studies because of the small amount of material available.

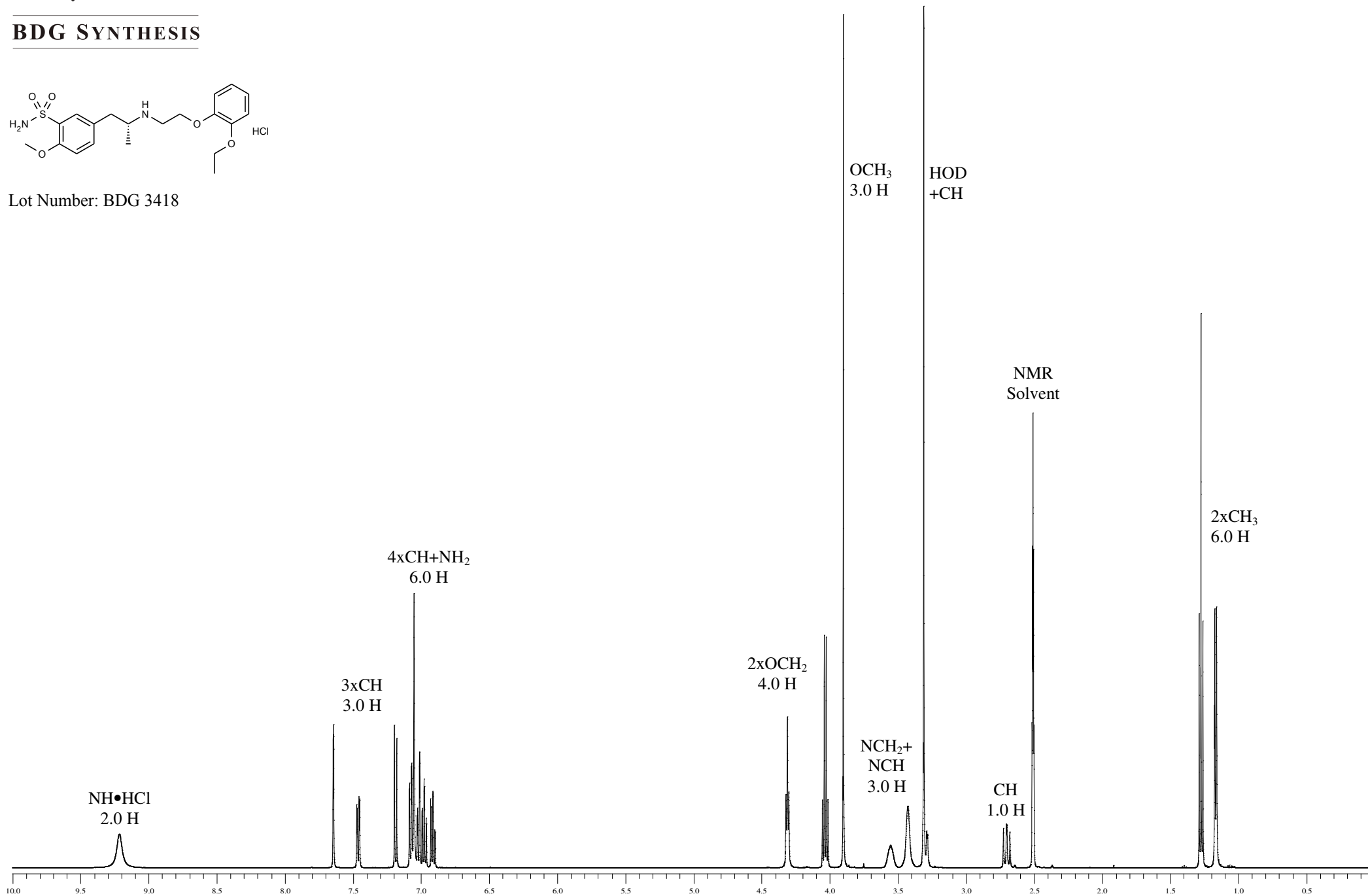


Proton NMR Spectrum of Tamsulosin HCl in DMSO-d₆

BDG SYNTHESIS



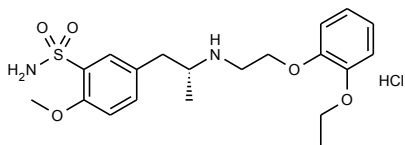
Lot Number: BDG 3418



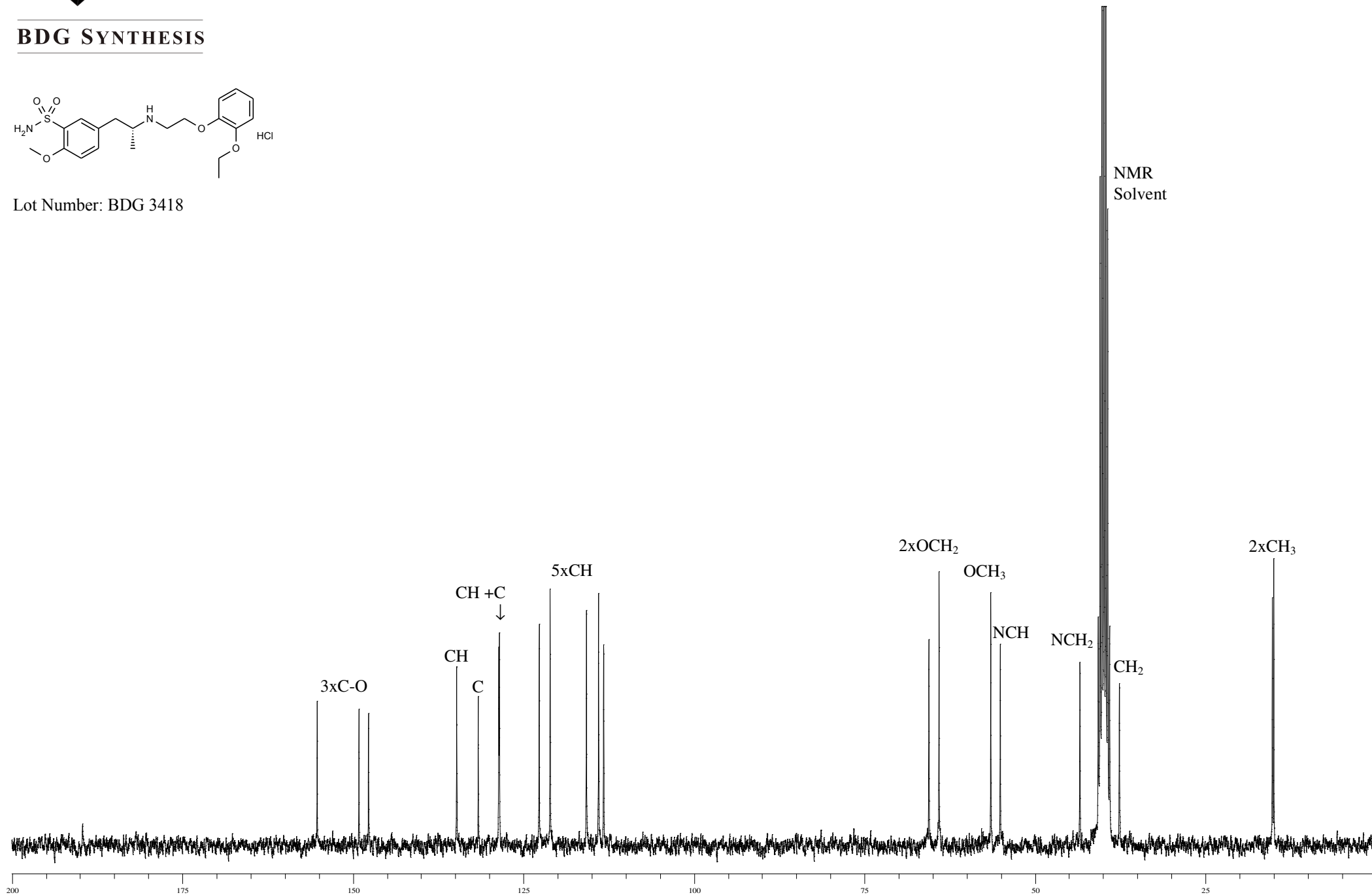


Carbon-13 NMR Spectrum of Tamsulosin HCl in DMSO-d₆

BDG SYNTHESIS



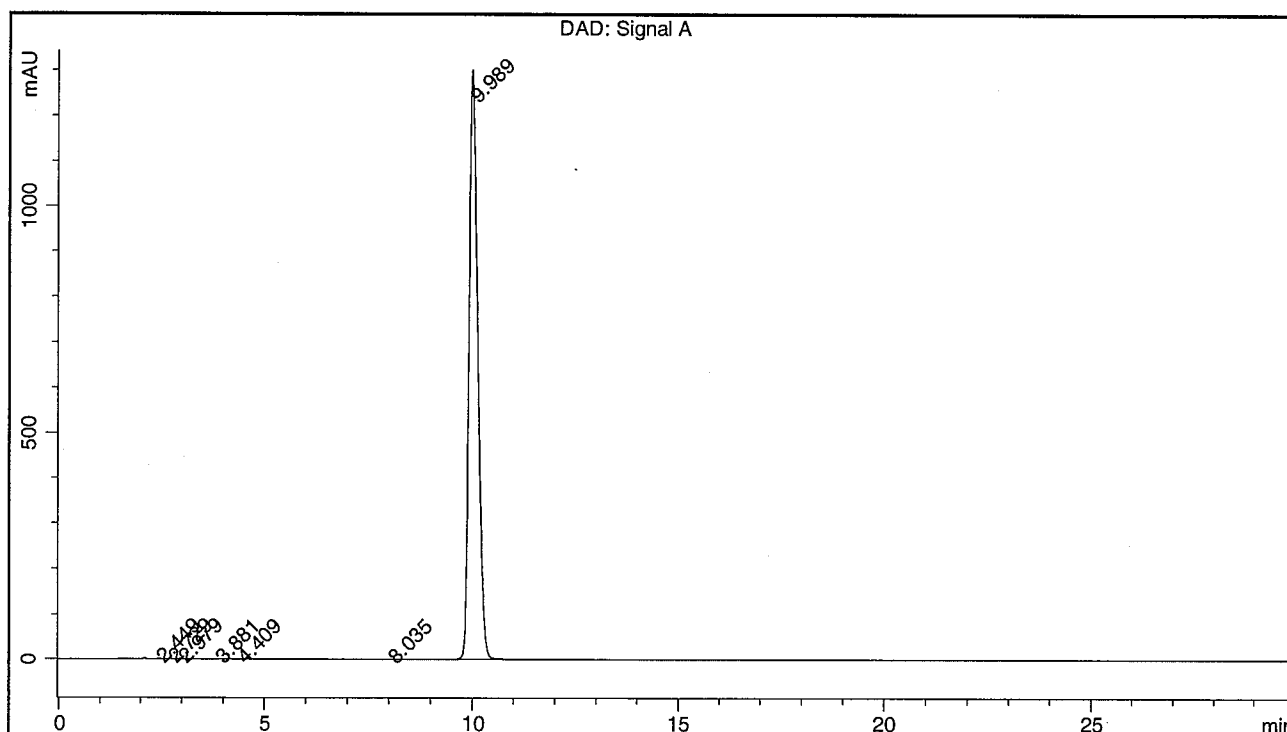
Lot Number: BDG 3418



BDG - Analysis of Tamsulosin HCl

Column : Phenomenex Luna C18(2) 5um 250 x 4.6 mm
 Guard : Phenomenex Security Guard C18 RP 4 x 3 mm
 Mobile Phase : 65:35 EP Buffer pH=2.0 : Acetonitrile
 EP Buffer pH=2.0 : 0.15% Sodium Hydroxide + 0.72% Perchloric Acid to pH=2.00 (NaOH)
 Column Temperature : 40 C Flow Rate : 1.0 mL/min Injection Volume : 10 uL
 Sample Solvent : Mobile Phase Detection : UV 225 nm

Sample Name	BDG 3418	Instrument	AnalyticalLC01
Acquisition	04/11/2016, 18:18:53	Method (rev.)	LC10698a (5)
Sequence	BDG_04Nov2016f - Reprocessed	Vial Position	1
Operator	solvation010\cerityadmin	Injection	1 of 1



Area Percent Report

Peak#	RT	Peak Height	Peak Area	Width	Area %
1	2.45 min	0.7119	9.3696	0.1896 min	0.049 %
2	2.73 min	0.8459	6.3493	0.1196 min	0.033 %
3	2.98 min	1.3421	6.0837	0.0769 min	0.032 %
4	3.88 min	0.7160	5.8914	0.1200 min	0.031 %
5	4.41 min	0.8879	10.8514	0.1946 min	0.057 %
6	8.03 min	0.4037	5.6668	0.1837 min	0.030 %
7	9.99 min	1298.8951	19104.4244	0.2276 min	99.769 %